

# Akiko Araki, RN, PHN, DNSc, MBA Executive Officer of JNA

## Nursing Innovation in Primary Health Care

# JNA efforts toward the creation of community-based integrated care system for all generations

Akiko Araki, RN, PHN, DNSc, MBA

Executive Officer

Japanese Nursing Association

2019 ICN Congress

June 29<sup>th</sup>, 2019



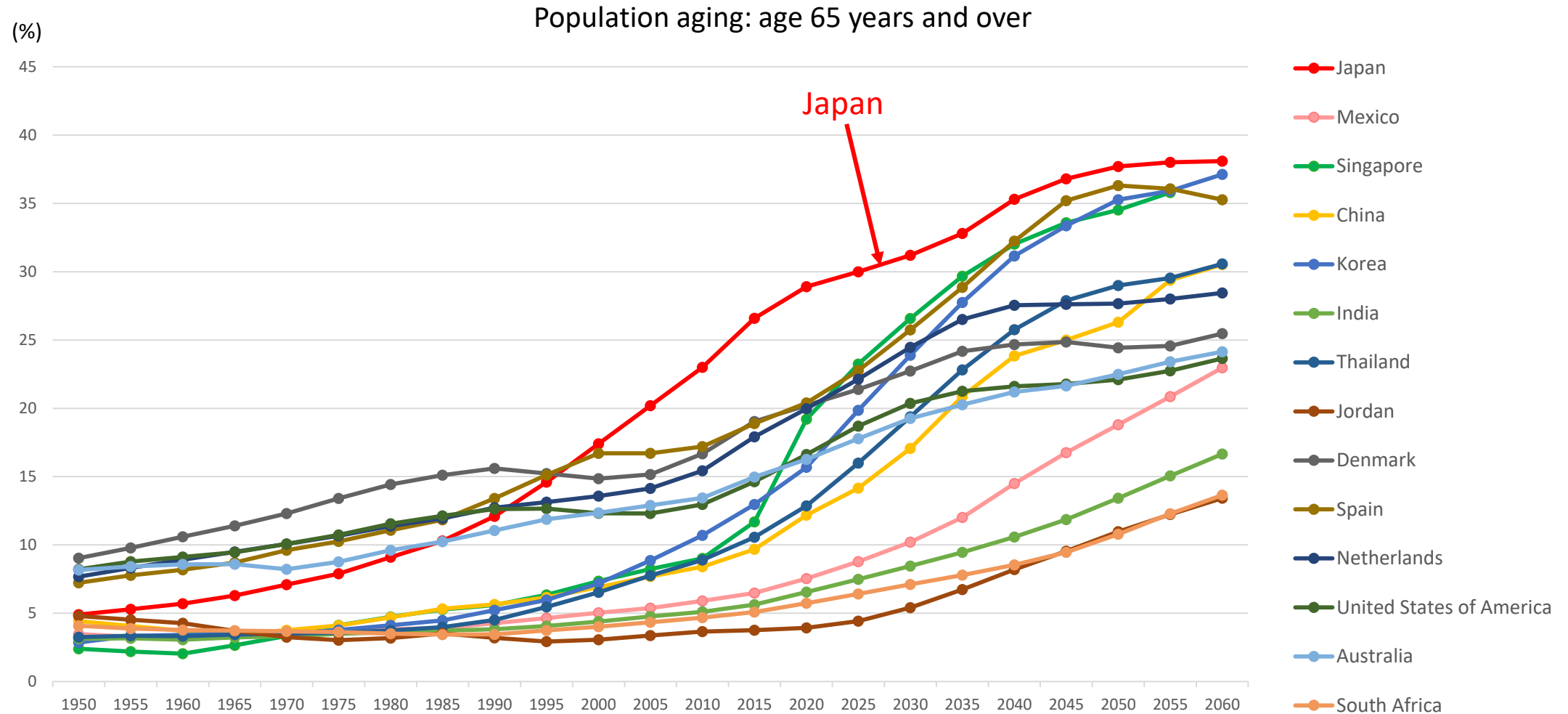
Live life, together we create  
Japanese Nursing Association

# Today's topics

1. Current situation in Japan
2. JNA's "Future Vision of Nursing"
3. JNA efforts toward establishment of nursing provisional structure at the community-based integrated care system



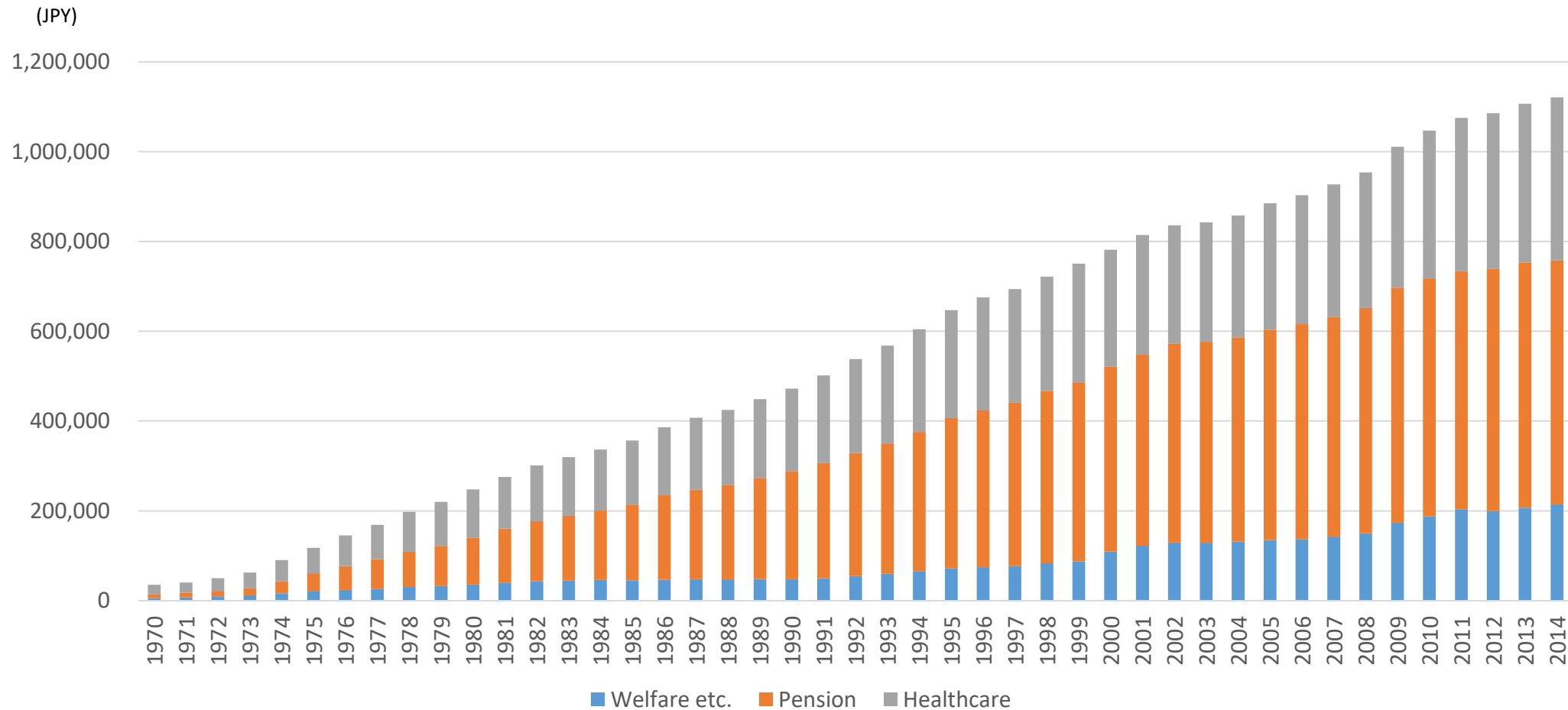
# Society of super-aged and fewer children



Source: United Nations Population Division of the Department of Economic and Social Affairs, World Population Prospects: The 2017 Revision, <http://esa.un.org/unpd/wpp/> (accessed on April 10, 2019)  
 Japan: Population Census for data between 1950 and 2010; National Institute of Population and Social Security Research, Population Projections for Japan (2017) for data after 2015  
[http://www.ipss.go.jp/pp-zenkoku/j/zenkoku2017/db\\_zenkoku2017/db\\_s\\_suikeikekka\\_1.html](http://www.ipss.go.jp/pp-zenkoku/j/zenkoku2017/db_zenkoku2017/db_s_suikeikekka_1.html) (accessed on April 10, 2019)



# Increase in Social Security Benefits



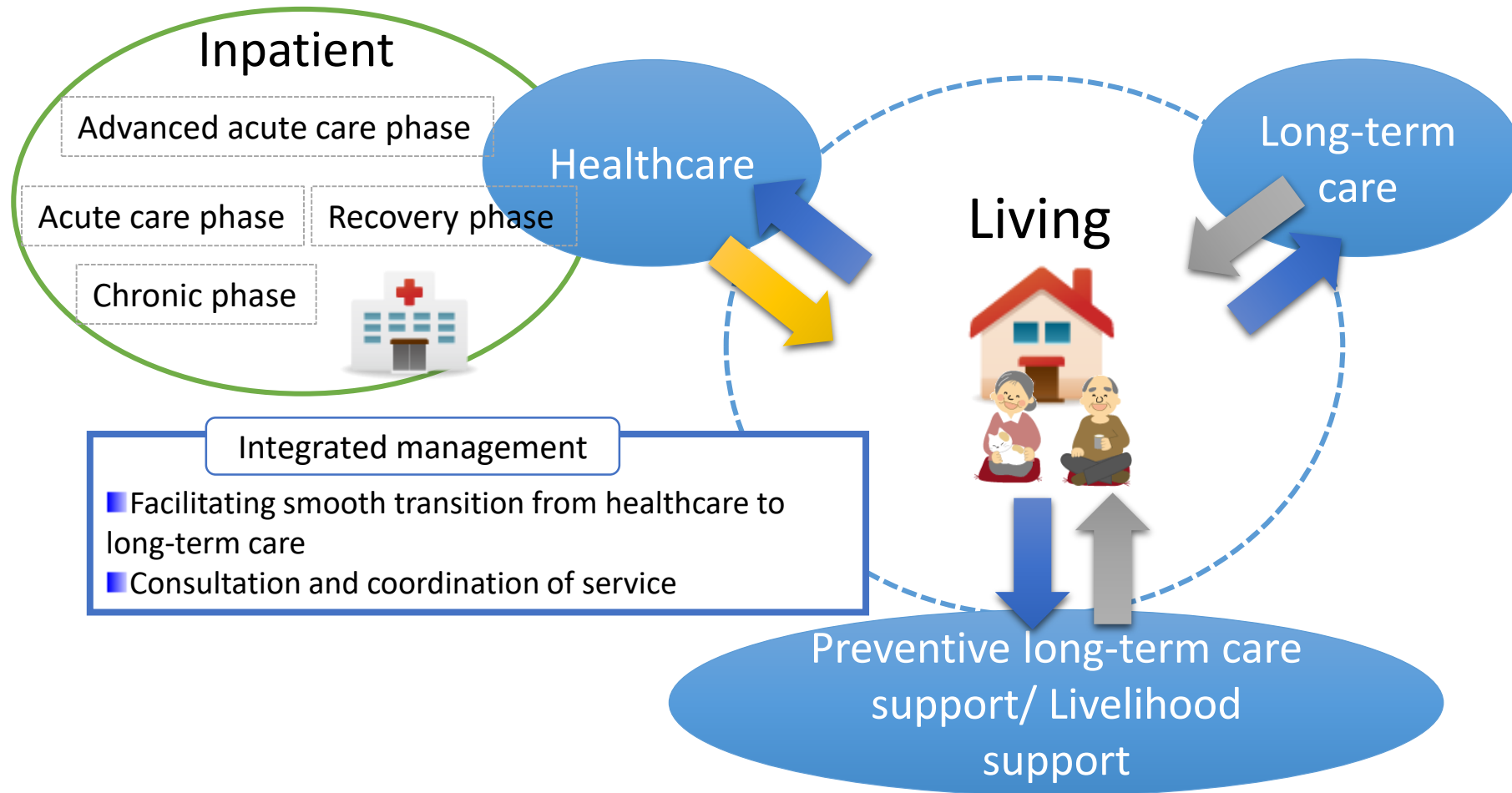
Created from Trends in Social Security Benefits, "Financial Statistics of Social Security in Japan FY 2017", National Institute of Population and Social Security Research <http://www.ipss.go.jp/ssj-db/ssj-db-top.asp> (accessed on April 17<sup>th</sup>, 2019)

\* 100 JPY = 1.21 SGD (exchange rate of April 17<sup>th</sup>, 2019)



# Toward healthcare and nursing supported by community

## Building community-based integrated care system



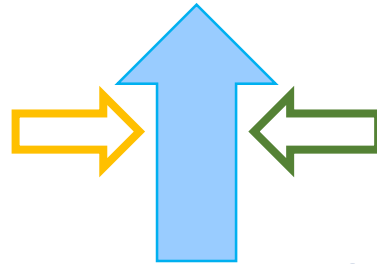
Reference: This figure is created and rearranged by JNA based on the figure of community-based integrated care system posted on the website of Ministry of Health, Labour and Welfare  
[http://www.mhlw.go.jp/stf/seisakunitsuite/bunya/hukushi\\_kaigo/koureisha/chiiki-houkatsu/](http://www.mhlw.go.jp/stf/seisakunitsuite/bunya/hukushi_kaigo/koureisha/chiiki-houkatsu/) (accessed on June 25, 2018)

# JNA's "Future Vision of Nursing"

Published on June 2015

Society that people in any condition of health can live with by one's own value

Viewpoint of  
**"Healthcare"**



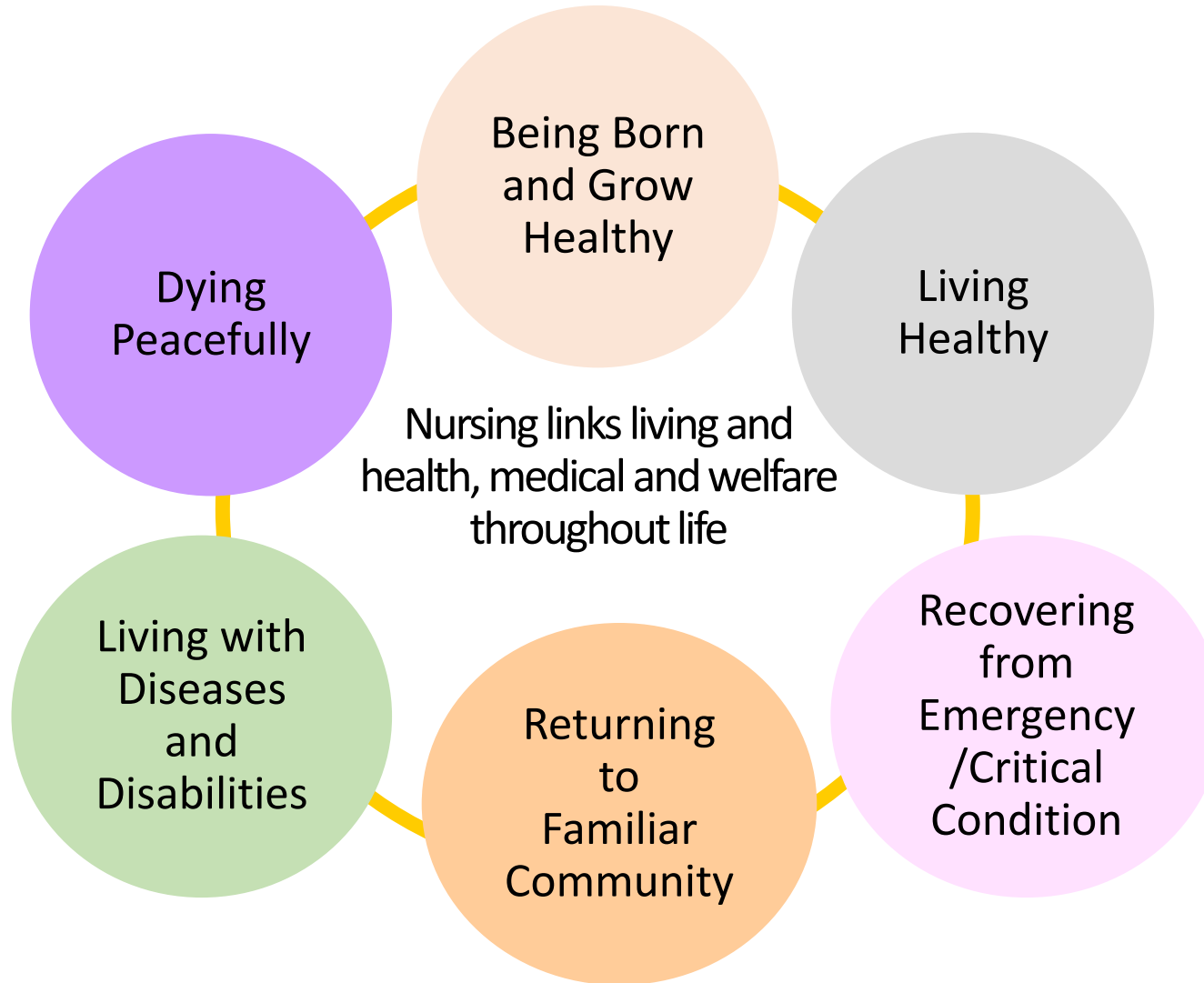
Viewpoint of  
**"Quality of life"**

Future Vision of Nursing

Nursing Supports and Sustains  
Human Life, Living and Dignity

# JNA's "Future Vision of Nursing"

Published on June 2015





# Building community-based integrated care system for all generations

Nursing professions should function on all occasions from the birth of people through to their end. They support all people at the community-based integrated cares system.

- Formulating relationships and communities where families, pregnant and parturient women, and local residents help each other in child-rearing.
- Helping people to acquire knowledge, behavior and habits to maintain health from their child age.
- Promoting, in collaboration with people, the formulation of communities and workplaces where people's healthy habits are set in place and maintained.
- Supporting people with diseases/disabilities to live an independent life that matches them with reassurance.
- Supporting people to live a life with dignity that matches them through to the final stage of their life.

## Future Vision of Nursing

**All persons including not only convalescent elders, but also people rearing children, children and people with disabilities live with a sense of reassurance.**



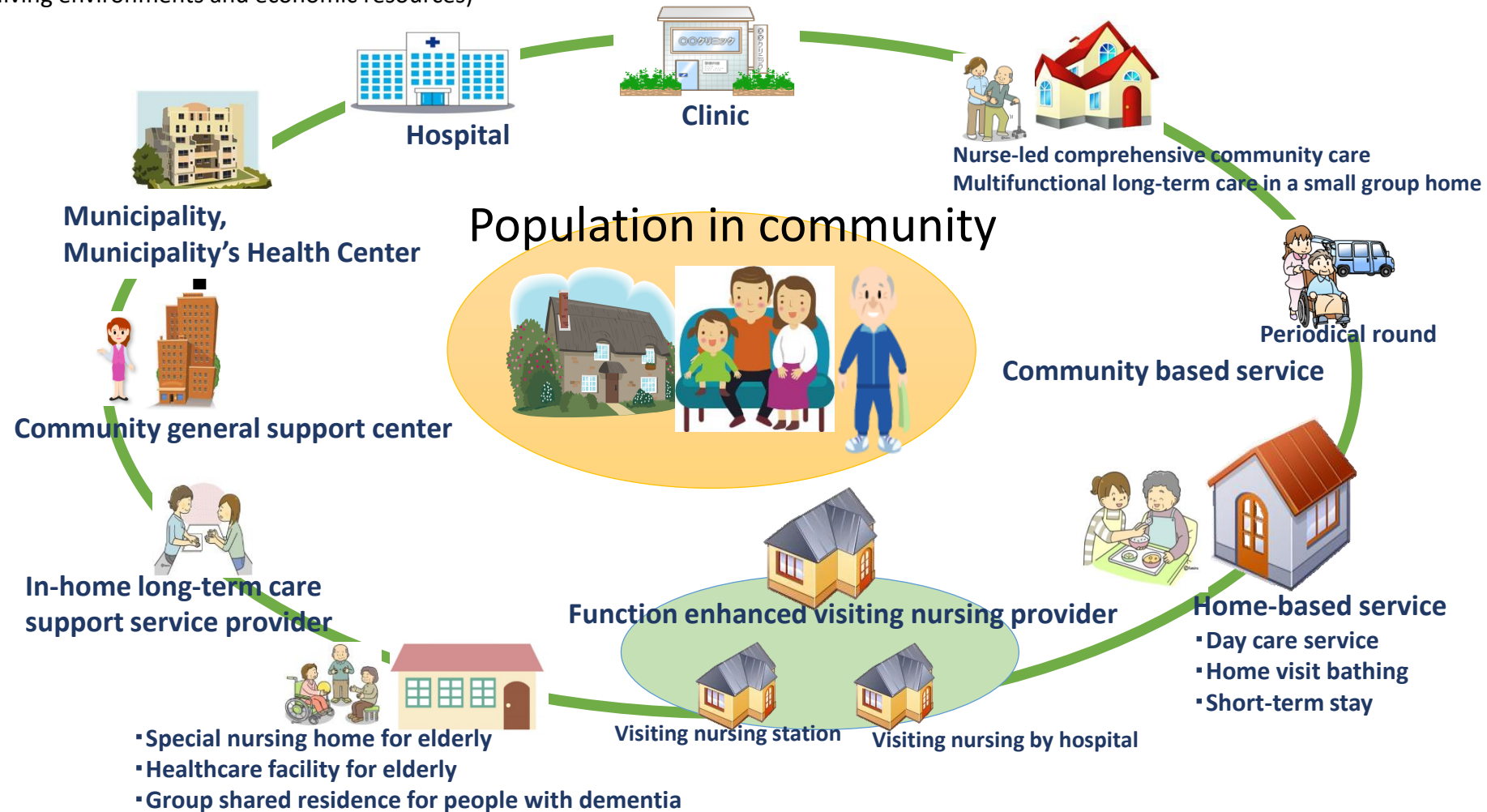
# Enhancing partnership among nursing professions in community

The population needs in community become **complicated and varied.**

(e.g. diseases, disabilities, values, housing, family composition, living environments and economic resources)



**Link** among service resources in community is essential. Nursing professions working at institutions and service providers are the key for coordination and management.



# Strengthen networking among nursing profession in community

Aim: Establishing mechanism to support lives of population with a sense of reassurance through development of intra-professional collaboration among nurses

JNA commissioned projects to regional branch of prefectural nursing associations etc. at 20 settings in order to strengthen networking foundation among nurses and among related professions in their community.

## 1. Activities toward regular networking among nursing professions in community



Central District of Okinawa Nursing Association;  
Opinion exchange meeting aiming to establish network among related organization of nursing professions

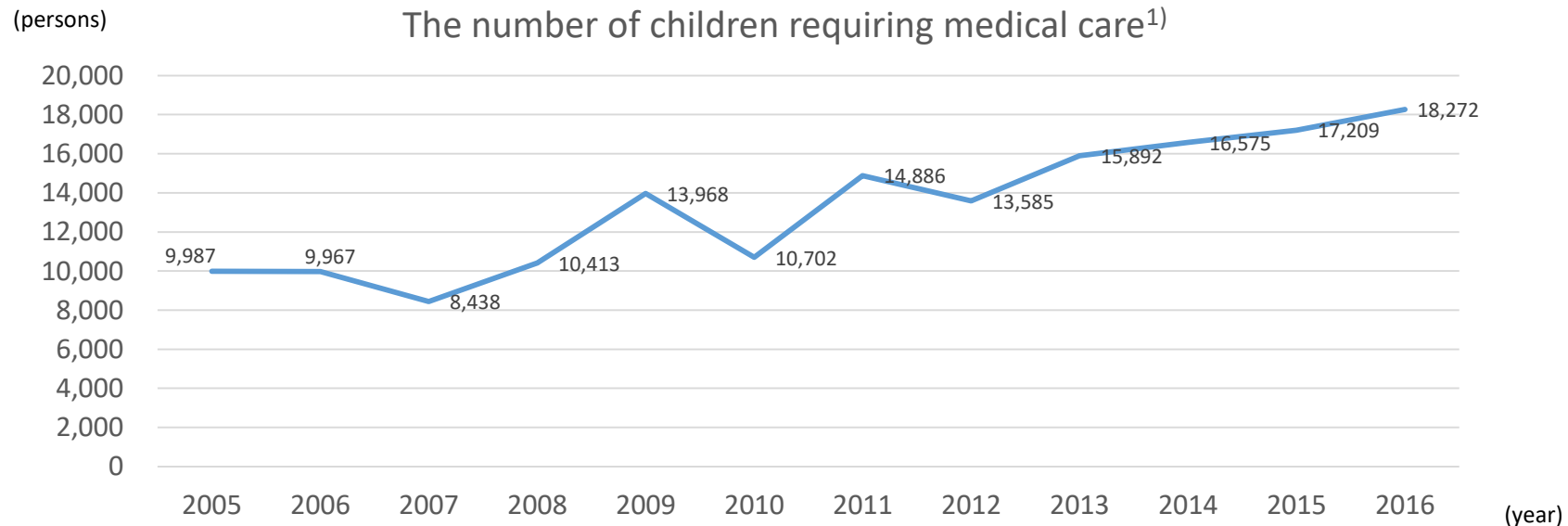
## 2. Events with community or intra-professions



Okitama Branch, Yamagata Nursing Association;  
Physical exercise to prevent long-term care at  
"town corner healthcare consultation room"

# Support for children's transition of from hospital to home-based care

- Japan is the one of the top class countries of rescue rates on extremely low-birth-weight baby and severely ill newborn.
- The number of children requiring medical care including management of respirator and gastric fistula at home is about 18,000 in Japan.<sup>1)</sup>
- There were gaps in notions between hospitals and visiting nursing stations about “the timing to inform discharge” and “the image of medical care at home” .<sup>2)</sup>



1) The Health and Labour Science Research Grant, Comprehensive Research on Disability Health and Welfare; The report from “ Actual situation survey on children requiring medical care and research on collaboration among medical, welfare, health, education etc. by Tamura group”  
Source: ministry of Health, Labour and Welfare; document no. 1 of the FY 2018 Joint Meeting for persons in charge of establishment of community support system for children requiring medical care and others [https://www.mhlw.go.jp/stf/seisakunitsuite/bunya/0000181001\\_00001.html](https://www.mhlw.go.jp/stf/seisakunitsuite/bunya/0000181001_00001.html) (accessed on April 18, 2019)

2) Interview of nurses working at hospital and visiting nursing stations conducted by JNA in 2015



# Training of trainers program on support for children's transition from hospitals to home based care

**Issues:** Nursing professions working at hospitals with NICU/GCU are required to provide care to children, including extremely low-birth-weight baby, with a view of their living after discharge throughout their admission.

## JNA Activities

FY2016 : Developed “the pathway and education program for NICU/GCU on support for children's transition from hospitals to home based care”

FY2017-: Training of Trainers on support for children's transition from hospitals to home based care

**Outcomes:** The number of training graduates in FY 2017, 2018 : 290

Report from Graduates(response through questionnaire)

- Increased number of facilities were introduced, on the development and under consideration of the pathway and/or education program
- Increased communication among staff on discharge support
- Increased opportunities to collaborate with other health workers



## Other JNA activities on enhancing intra-professional collaboration among nursing professions in community

JNA also works at other activities aiming for people to receive seamless care by the collaboration of nursing professions working throughout community which enable them to play their role.

- Development of effective and efficient collaboration model of nursing professions in community
- Development of business proposition toward inclusive society with nurse-led community based care at the core





**Follow @ICNurses on Twitter and  
use #ICNcongress on Social Media!**



**Singapore**

International Council of Nurses

